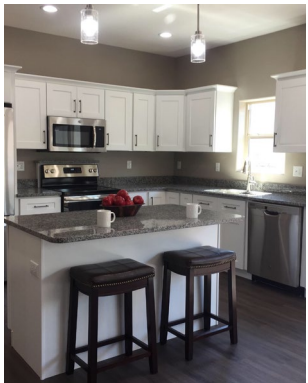




*Woodland
Park*



920 & 910 Pinyon Place

Another brand new high-quality custom home by Excalibur Construction!

This stunning custom patio home has been crafted from the ground up with beautiful finishes and designed with carefree living in mind. With 1,632 SF, this ground-level open-concept floor plan includes 3-bedrooms, 2-bathrooms, a spacious vaulted living room, laundry room, mud room, and an extra deep 2-car finished garage. The living room holds a gas-fireplace. The kitchen includes custom maple cabinets, granite countertops, and a stainless-steel appliance package. The master includes a walk-in closet, jetted tub and a shower that is sure to please.

The exterior is totally maintenance-free with seamless metal siding, aluminum soffit, fascia, rain gutters, double painted Pella windows and beautiful accents. Outdoor entertaining areas include a rear concrete patio, fully landscaped yard with sod, and a sprinkler system. Additionally, with a \$100 per month fee, the Homeowners' Association will take care of all of your exterior needs from snow removal to landscape maintenance! Call Excalibur today to make your American Dream come true! Excalibur has a one-year contractor's warranty at closing.

A sound investment of \$317,500/each

EXCALIBUR

CONSTRUCTION, INC.

920 PINYON

910 PINYON

